

Quantum Spark 2500 Series for SMBs and Branches

Security Gateways



YOU DESERVE THE BEST SECURITY



Top Security Effectiveness

Check Point has been ranked #1 for the third consecutive year, achieving a 99.9% malware block rate, 99.7% phishing prevention and 98% high and critical exploit prevention in the [Miercom Hybrid Mesh Firewall Benchmark 2025](#)

Named a Leader by Top Analyst Firms
[Forrester Wave™ for Enterprise Firewalls 2024](#)

Check Point Recognized as a Leader and Outperformer for Enterprise Firewalls
[GigaOm Radar for Enterprise Firewalls 2025](#)

Supercharge your network security with the Quantum Spark 2500 gateway series of next generation firewalls designed for today's fast-paced SMBs and branches. Experience lightning-fast threat prevention with throughputs up to 5,500 Mbps, and stay connected with the latest Wi-Fi 7, 5G cellular, and 10GbE LAN ports.



Enterprise Grade Security



Fastest Connectivity with Wi-Fi 7 and 5G Cellular



Unified Security Management

Quantum Spark 2500 Performance Highlights

Model	Next Gen Firewall	Threat Prevention
QS 2530	1,200 Mbps	750 Mbps
QS 2550	1,600 Mbps	1,000 Mbps
QS 2560	3,750 Mbps	1,850 Mbps
QS 2570	5,000 Mbps	2,500 Mbps
QS 2580	9,000 Mbps	3,200 Mbps
QS 2590	11,000 Mbps	5,500 Mbps

Advanced security and uncompromising performance, built for SMBs & branches

Check Point Quantum Spark 2500 security gateway family delivers enterprise-grade security for small and medium businesses and enterprise branches in a series of simple and affordable, all-in-one security solutions. Models with the latest Wi-Fi 7 and embedded 5G modem provide fast and resilient connectivity.

Comprehensive and Industry-Leading Security

- Next Generation Firewall
- Site-to-Site and Remote Access VPN
- Application and Web Filtering
- Intrusion Prevention
- Antivirus and Anti-Bot
- Advanced DNS Security
- Sandboxing
- Zero-phishing (no agent required)

Quantum Spark Management

Managed Service Providers use Quantum Spark Management to provision up to thousands of gateways efficiently, reducing operational overhead. Interactive dashboards provide quick identification of security, connectivity and licensing issues across all customers. With proactive management alerts, MSP administrators can be notified of issues over SMS, email, MS Teams and more, enabling faster resolution.

Spark Management is included with the Spark appliance at no extra cost.

The Spark 2500 series can be managed by Spark Management, Web UI, Smart-1Cloud and Management Server.

5G cellular connectivity

Get the latest 5G cellular standard, offering the highest throughputs, which can be used as a primary WAN connection (Fixed Wireless Access) or as a backup link. Supports Dual SIM Single Standby (DSSS) and backward compatibility to 4G/LTE networks.

Latest Wi-Fi 7

The Quantum Spark 2500 series support the latest Wi-Fi 7 standard with up to 30% added throughput over previous Wi-Fi 6 models as well as improved client density and reduced latency.

Highest Performance Threat Prevention

Thanks to R82 security and management technology, with the 2500 Series, you can inspect encrypted traffic and prevent even the most evasive attacks without impacting internal network performance. Achieve 5.5 Gbps of threat prevention throughput and 17.5 Gbps of firewall throughput.

Quantum Spark 2530/2550



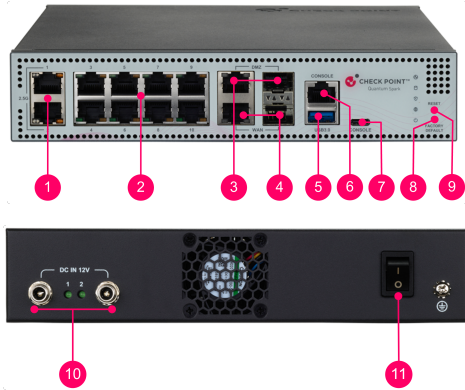
1. Power Switch
2. 6x RJ45 1GbE LAN ports
3. 1GbE RJ45/SFP WAN port
4. 1GbE RJ45/SFP DMZ port
5. USB 3.0 Type-A port
6. USB Type-C console port
7. Power Supply Connector
8. Wi-Fi Antennas (x2) for supported models:
 CPAP-SG2530W-SNBT
 CPAP-SG2550W-SNBT
 CPAP-SG2550W5G-SNBT (4 Antennas)

Quantum Spark 2560/2570



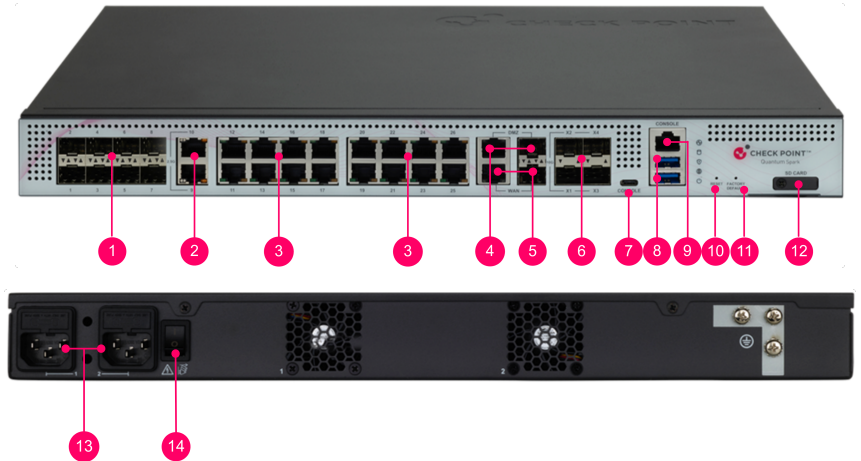
1. Power Switch
2. 8x RJ45 1GbE LAN ports
3. 1GbE RJ45 WAN port
4. 1GbE SFP DMZ port
5. 2x 10GbE SFP+ LAN/WAN ports
6. USB 3.0 Type-A port
7. USB Type-C console port
8. Power Supply Connector (Dual)
9. Wi-Fi Antennas (x4) for supported models:
 CPAP-SG2560W-SNBT
 CPAP-SG2570W-SNBT
 CPAP-SG2570W5G-SNBT (8 Antennas)

Quantum Spark 2580



1. 2x RJ45 2.5GbE LAN ports
2. 8x RJ45 1GbE LAN ports
3. 10GbE RJ45/SFP+ DMZ ports
4. 10GbE RJ45/SFP+ WAN ports
5. USB 3.0 Type-A port
6. RJ45 console port
7. USB Type-C console port
8. Factory Default switch
9. Reset switch
10. Dual power Supply Connector
11. Power Switch

Quantum Spark 2590



1. 8x 1GbE SFP LAN ports
2. 2x RJ45 2.5GbE LAN ports
3. 16x RJ45 1GbE LAN ports
4. 1GbE RJ45/SFP DMZ ports
5. 1GbE RJ45/SFP WAN ports
6. 4x 10GbE SFP+ LAN ports
7. USB Type-C console port
8. 2x USB 3.0 Type-A ports
9. RJ45 console port
10. Reset switch
11. Factory default switch
12. SD card slot
13. Power Supply sockets (Dual)
14. Power Switch

Specifications

Test Conditions	2530	2550	2560	2570	2580	2590
Threat Prevention [Mbps] ¹	750	1,000	1,850	2,500	3,200	5,500
Next Generation Firewall [Mbps] ²	1,200	1,600	3,750	5,000	7,500	11,000
IPS Throughput [Mbps]	1,720	2,300	5,170	6,900	8,500	12,000
Firewall Throughput [Mbps]	2,250	3,000	6,750	9,000	10,000	18,000
RFC 3511, 2544, 2647, 1242 Performance (Lab)						
Firewall 1518 bytes UDP [Mbps]	3,000	4,000	11,600	15,500	20,000	25,000
Firewall Latency Avg. (µSec)	90		30	24		
VPN AES-GCM 1452B [Mbps]	1,400		4,000	4,500		5,500
Connections/Sec	16,000	20,000	53,000	62,000	72,000	75,000
Concurrent Connections	1,000,000		2,000,000			4,000,000
Software						
Security	Firewall, VPN, User Awareness, QoS, Application Control, URLF, IPS, Anti-Bot, Antivirus, Anti-Spam, sandboxing					
Unicast, Multicast Routing and Clustering	OSPFv2, BGPv4 and 4++, RIP, PIM (SM, DM, SSM), IGMP, ClusterXL High Availability					
IPv6	local network and internet connections, dual stack tunneling IPv4 over IPv6 networks, prefix delegation					
Remote Access Users	100		200		1,000	
SD-WAN	Integrated SD-WAN network optimization and resilience					
VLAN's	Total physical and virtual (VLAN) interfaces per appliance: 1024 (single gateway)					
Link Aggregation	802.3ad passive and active link aggregation					
Layer 2	Layer 2 (transparent) and Layer 3 (routing) mode					
IPv6	NAT66 / CoreXL, SecureXL & VRRPv3					
Management Options	Web UI, Spark Management application, Smart-1 Cloud & Management Server					

Hardware	2530	2550	2560	2570	2580	2590
WAN Port	1 x 1GbE RJ45/SFP		1 x 1GbE RJ45		1 x 10GbE RJ45/SFP+	1 x 1GbE RJ45 / SFP
DMZ Ports	1 x 1GbE RJ45/SFP		1 x 1GbE SFP		1 x 10GbE RJ45/SFP+	1 x 1GbE RJ45 / SFP
LAN Ports <small>any LAN ports may be repurposed for WAN connectivity if required.</small>	6 x 1GbE RJ45		8 x 1GbE RJ45 2 x 10GbE SFP+		8 x 1GbE RJ45 2 x 2.5GbE RJ45	16 x 1GbE RJ45 2 x 2.5GbE RJ45 4 x 10GbE SFP+ 8 x 1GbE SFP
Wi-Fi & bands	Wi-Fi 7 2x2 2.4Ghz + 5Ghz		Wi-Fi 7 4x4 2.4Ghz + 5Ghz + 6Ghz		-	
5G / LTE (optional)	-	5G (SA, redcap) / LTE Cat 4	-	5G (SA / non-SA) / LTE Cat 20	-	
SD Card Slot	Micro-SD slot					
Dimensions / Weights						
Dimensions (W x D x H) Wired	210x180x42.5 mm, 8.3x 7.1x1.7 in.		210x194x42.5 mm, 8.3x7.6x1.7 in.		210x210x42.5 mm 8.3x8.3x1.7 in.	430x300x42.5 mm 16.9x11.8x1.7 in.
Dimensions (W x D x H) Wi-Fi			210x194x42.5 mm, 8.3x7.6x1.7 in.			
Dimensions (W x D x H) Wi-Fi / 5G			210x219x42.5 mm, 8.6x7.6x1.7 in.			
Weight – Wired	0.70 kg (1.53 lbs.)	0.70 kg (1.53 lbs.)	0.99 kg (2.18 lbs.)	0.99 kg (2.18 lbs.)	0.99 kg (2.18 lbs.)	4.47 kg (9.85 lbs.)
Weight – Wi-Fi	0.77 kg (1.70 lbs.)	0.77 kg (1.70 lbs.)	1.37 kg (3.02 lbs.)	1.37 kg (3.02 lbs.)		
Weight – Wi-Fi / 5G	-	0.98 kg (2.15 lbs.)	-	1.66 kg (3.65 lbs.)		
Weight Packed – Wired	1.78 kg (3.92 lbs.)	1.78 kg (3.92 lbs.)	2.05 kg (4.52 lbs.)	2.05 kg (4.52 lbs.)	2.05 kg (4.52 lbs.)	6.88 Kg (15.17 lbs.)
Weight Packed – Wi-Fi	1.85 kg (4.07 lbs.)	1.85 kg (4.07 lbs.)	2.68 kg (5.92 lbs.)	2.68 kg (5.92 lbs.)		
Weight Packed – Wi-Fi / 5G	-	2.14 kg (4.72 lbs.)	-	3.39 kg (7.47 lbs.)		
Environment						
Operating / Storage	0°C ~ 40°C / -45°C ~ 60°C (5~95%, non-condensing)					
MTBF	Wired / Wi-Fi Models - 126 Years		Wired / Wi-Fi Models - 33 Years		Wired - 57 Years	47.5 Years
Power Requirements						
AC Input	100 to 240VAC (47-63Hz)					
Dual Power	No		Available			
Power Supply Rating	12V/3.3A 40W power adapter (non-Wi-Fi)		12V/5A 60W power adapter (all Wi-Fi models)			External Power Supply
Power Consumption (Max)	26.01W (non-Wi-Fi); 31.28W (Wi-Fi); 35.5W (Wi-Fi-5G)					70.1W
Certifications						
Safety	CB IEC 62368-1, CE LVD EN62368-1, UL62368-1, ASNZS 62368.1					
Emissions	CE, FCC IC, VCCI, ASNZS ACMA					
Environmental	ROHS, REACH, WEEE, ISO14001					
Regulated Model	T90 (Wired), T90W (Wi-Fi)		T91 (Wired), T91W (Wi-Fi)		T92	T93

¹ Includes Firewall, Application Control, URL Filtering, IPS, Antivirus, Anti-Bot, SandBlast Zero-Day Protection with logging.

² Includes Firewall, Application Control, IPS with logging.

Security Appliances	SKU
2530 Desktop form factor, 1x1GbE RJ45/SFP WAN port, 1x1GbE RJ45/SFP port, 6x1GbE RJ45 LAN ports.	CPAP-SG2530-SNBT
2530W Desktop form factor, 1x1GbE RJ45/SFP WAN port, 1x1GbE RJ45/SFP port, 6x1GbE RJ45 LAN ports, 802.11be 2x2 MIMO Wi-Fi 7.	CPAP-SG2530W-SNBT
2550 Desktop form factor, 1x1GbE RJ45/SFP WAN port, 1x1GbE RJ45/SFP port, 6x1GbE RJ45 LAN ports.	CPAP-SG2550-SNBT
2550W Desktop form factor, 1x1GbE RJ45/SFP WAN port, 1x1GbE RJ45/SFP port, 6x1GbE RJ45 LAN ports, 802.11be 2x2 MIMO Wi-Fi 7.	CPAP-SG2550W-SNBT
2550W Desktop form factor, 1x1GbE RJ45/SFP WAN port, 1x1GbE RJ45/SFP port, 6x1GbE RJ45 LAN ports, 802.11be 2x2 MIMO Wi-Fi 7, 5G cellular	CPAP-SG2550-W-5G-SNBT
2560 Desktop form factor, 1x1GbE RJ45 WAN port, 1x1GbE RJ45/SFP DMZ port, 8x1GbE RJ45 LAN ports, 2x10GbE SFP+ LAN ports.	CPAP-SG2560-SNBT
2560 Desktop form factor, 1x1GbE RJ45 WAN port, 1x1GbE RJ45/SFP DMZ port, 8x1GbE RJ45 LAN ports, 2x10GbE SFP+ LAN ports, 802.11be 4x4 MIMO Wi-Fi 7.	CPAP-SG2560W-SNBT
2570 Desktop form factor, 1x1GbE RJ45 WAN port, 1x1GbE RJ45/SFP DMZ port, 8x1GbE RJ45 LAN ports, 2x10GbE SFP+ LAN ports.	CPAP-SG2570-SNBT
2570 Desktop form factor, 1x1GbE RJ45 WAN port, 1x1GbE RJ45/SFP DMZ port, 8x1GbE RJ45 LAN ports, 2x10GbE SFP+ LAN ports, 802.11be 4x4 MIMO Wi-Fi 7.	CPAP-SG2570W-SNBT
2570 Desktop form factor, 1x1GbE RJ45 WAN port, 1x1GbE RJ45/SFP DMZ port, 8x1GbE RJ45 LAN ports, 2x10GbE SFP+ LAN ports, 802.11be 4x4 MIMO Wi-Fi 7, 5G cellular.	CPAP-SG2570-W-5G-SNBT
2580 half-sized rack mount, 1x10GbE RJ45/SFP WAN port, 1x10GbE RJ45/SFP DMZ port, 8x1GbE and 2x2.5GbE RJ45 LAN ports and Dual power supply.	CPAP-SG2580-SNBT
2590 1U rack mount, 16x 1GbE RJ45, 2x 2.5GbE RJ45, 4x 10GbE SFP, 8x 1GbE SFP, LAN ports 1x 1GbE RJ45 / SFP WAN Ports, 1x 1GbE RJ45 / SFP DMZ Ports and dual internal power supply.	CPAP-SG2590-SNBT

ACCESSORIES

Power Supplies	SKU
Replacement Power Supply for 2530, 2550 wired and Wi-Fi models	CPAC-2530/2550-PSU
Replacement Power Supply for 2550W5G, 2560, 2560W, 2570, 2570W, 2580, 3920, & 3950 models	CPAC-2550W5G/2580/3920/3950-PSU
Replacement Power Supply for 2570W5G models	CPAC-2570W5G-PSU

Rack Mounts	SKU
Rack Mount ears for 2530, 2550, 2560, 2570, 2580, 3920, 3950 models	CPAC-2500/3900-RM-EARS
Rack Mount shelf for Single/Dual for 2500/ 3600/ 3800 desktop appliances. The mount does not support Quantum Spark models with Wi-Fi	CPAP-2500/3900-RM-DUAL

Antennas	SKU
Replacement Wi-Fi and 5G antennas for 2530 and 2550 models. Contains four antennas (2+2)	CPAC-2550-ANTENNA
Replacement of 5G antennas for 2570 5G model. Contains four antennas.	CPAC-2570-ANTENNA

Transceivers	SKU
1GB Short Range Transceiver	CPAC-TR-1SX-D
1GB Long Range Transceiver	CPAC-TR-1LX-D
10GB Short Range Transceiver	CPAC-TR-10SR-D
10GB Long Range Transceiver	CPAC-TR-10LR-D

SD Memory Cards	SKU
SD memory card 64GB	CPAC-1500-64GB-SD
SD memory card 32GB	CPAC-1500-32GB-SD

SUBSCRIPTION SERVICES

	NGFW	NGTP	SNBT (SandBlast)*
Application Control	✓	✓	✓
IPS	✓	✓	✓
URL Filtering		✓	✓
Anti-Bot		✓	✓
Anti-Virus		✓	✓
Anti-Spam		✓	✓
SandBlast Threat Emulation (sandboxing)			✓
Zero Phishing			✓
IoT Network Protection	IoT for SMB (Web UI and Spark Management) is included IoT for Enterprise (Smart-1) requires an additional license		
SD-WAN Network Optimization	SD-WAN for SMB (Web UI and Spark Management) is included SD-WAN for Enterprise (Smart-1) requires an additional license		

*The first-year purchase includes the SNBT package. Security subscription renewals, NGFW, NGTP and SNBT are available for subsequent years.

Worldwide Headquarters

5 Shlomo Kaplan Street, Tel Aviv 6789159, Israel | Tel: +972-3-753-4599

U.S. Headquarters

100 Oracle Parkway, Suite 800 Redwood City, CA 94065 | Tel: 1-800-429-4391

www.checkpoint.com

© 2026 Check Point Software Technologies Ltd. All rights reserved.